



Write your serial number here for future easy reference

---

## User Manual & Hook-Up Guide

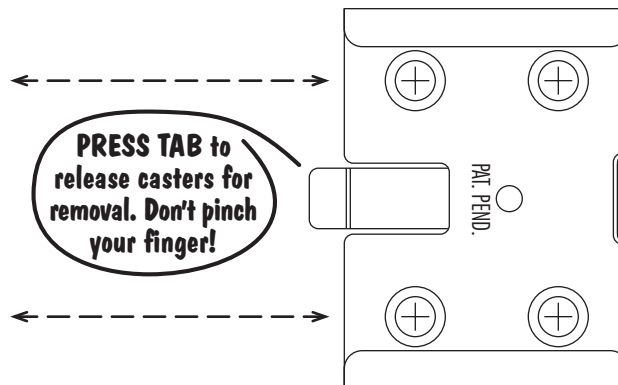
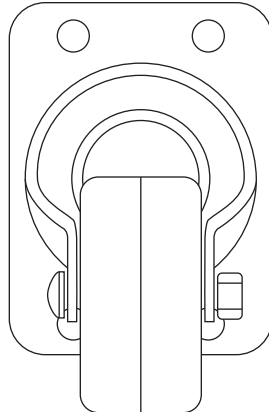
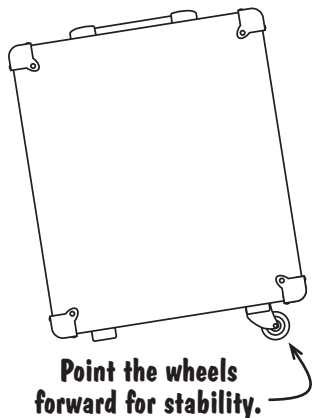
Part No. 40-00-0037 - Rev. B  
also available in Electrophonic Format from [www.line6.com](http://www.line6.com)

### REMOVABLE Easy On/Off Casters

If you're using a single Cab 212S, or have a couple of them spread out for wide stereo sound, we recommend that you try taking off the two rear casters only. That'll make the cab tilt back and shoot the sound up toward you. The HD

can still sit on top of the Cab 212S in this configuration. You'll want to be sure to take all the casters off of the top cabinet if you're stacking a couple of Cab 212S cabinets on top of each other for a typical stack setup.

REAR CASTERS REMOVED:



**WARNING** Don't blow stuff up

### VOLUME LEVELS

When using your Flexitone guitar amplification system, be sure to exercise some common sense when it comes to volume levels. The Flexitone HD is a high-powered head designed to drive up to four 4x12 cabinets per side. So, obviously, it's packin' enough juice to spare that you could fry the speakers of a single Flexitone Cab 212S, or a pair of 212S Cabs, if you really tried.

### WARNING SIGNS

If you see the speakers practically jump out through the speaker grille, and they're making rude noises, back off on the Flexitone HD's Master Volume a wee bit to get things back into the realm of reasonable operational levels (note that we've included some recommended maximum volume settings with the hook-up diagrams on the flip side). Also understand that Line 6 can not be liable for replacement of speakers damaged by abuse. Moral of the story: feel free to crank it up, but do it with a bit of sense.

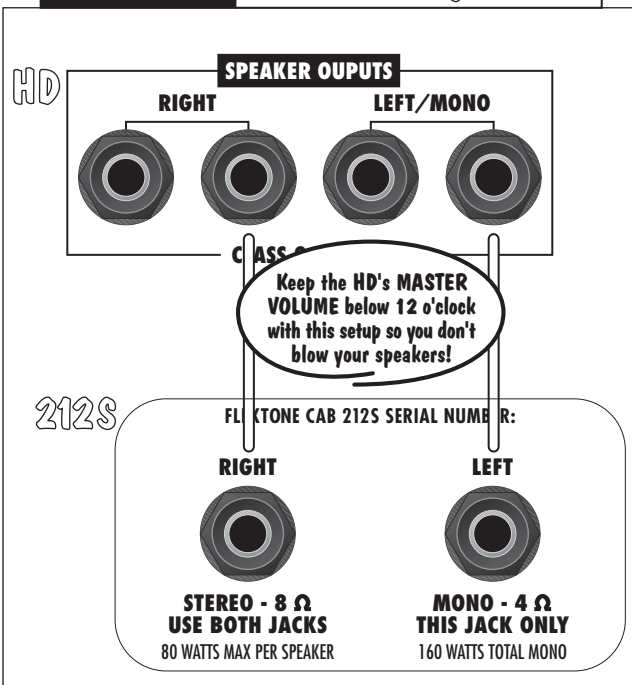
### CARE & FEEDING

To keep your cabinet looking spanking new, you can use a damp cloth. If it was a particularly dirty gig, a nonabrasive household cleaner such as Formula 409 or Fantastik should be the thing to wipe away any extreme dirt. Spray the cleaner onto a cloth, and then use the cloth to clean the 212S. Also, avoid prolonged exposure to high temperature in direct sunlight (like under the rear windshield of your 1985 Toyota Supra hatchback).

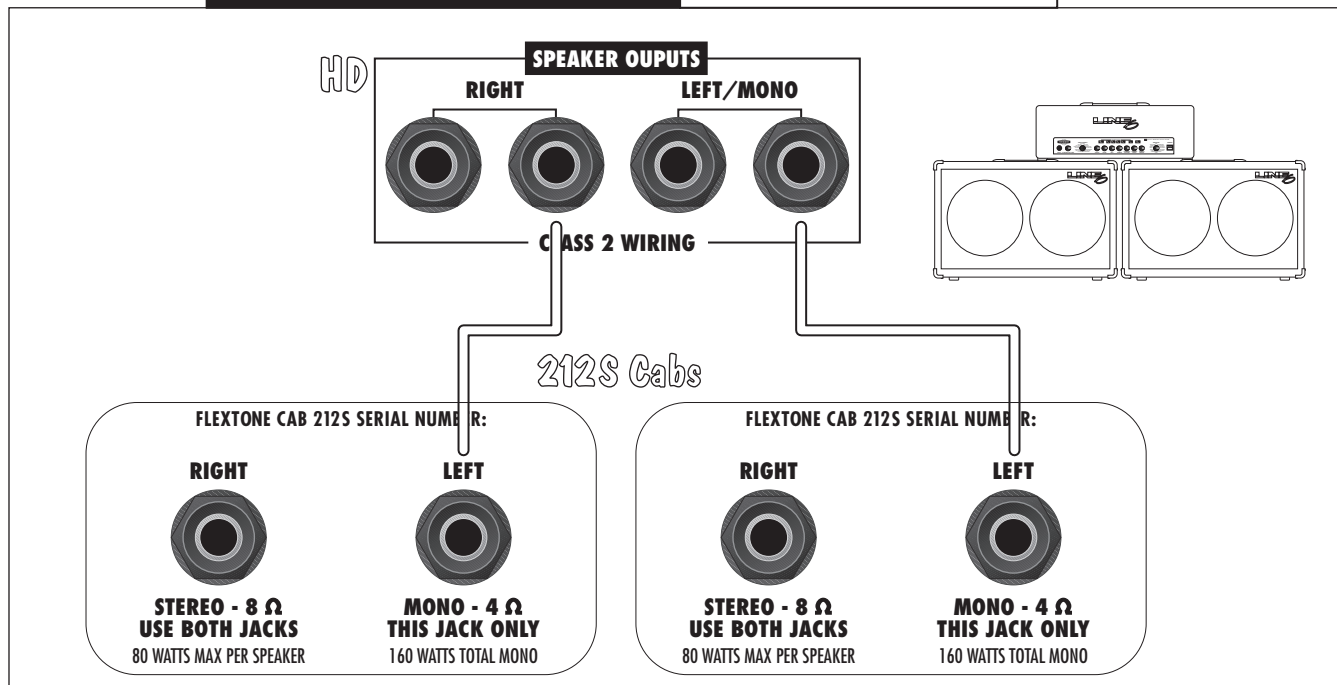
### SETTING UP & GETTING HELP

See the diagrams on back as well as the Flexitone HD User Manual for details on connections and operation. Note that one of the jacks is labeled Mono – you want to be sure to use this one for mono setups; otherwise, you'll only hear one speaker. Also, be sure to use only heavy gauge unshielded cables for speaker cabling (don't use guitar cables). And, if you're mystified by some bit of esoterica we've failed to cover in the written documentation, you can always reach out and touch our helpful Customer Support staff via any of the following communications protocols: Phone (805) 379-8900 weekdays, 8am - 6pm Pacific Time. Surf [www.line6.com](http://www.line6.com). Email [support@line6.com](mailto:support@line6.com). Or shoot a note to Line 6 Customer Service, 555 St. Charles Drive, Suite 100, Thousand Oaks, CA in the good old USA.

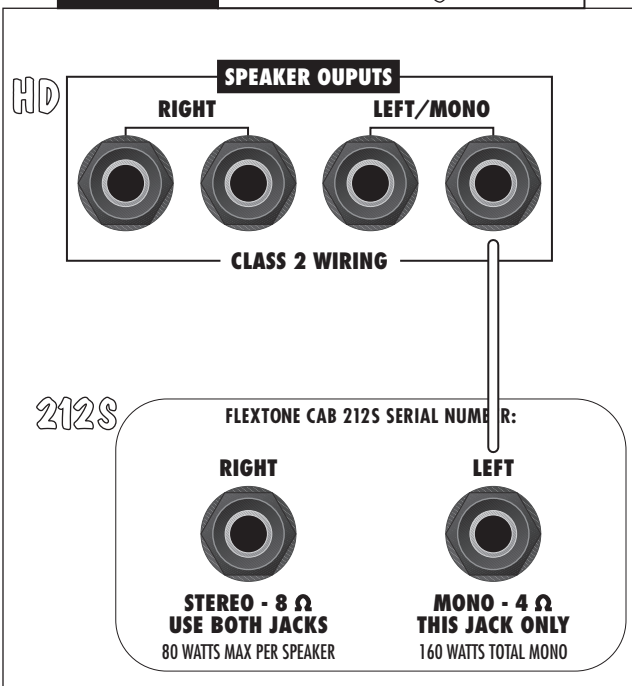
## STEREO HD with Single 212S



## SIDE by SIDE STEREO HD with Pair of 212S



## MONO HD with Single 212S



## STACKED STEREO HD with Pair of 212S

