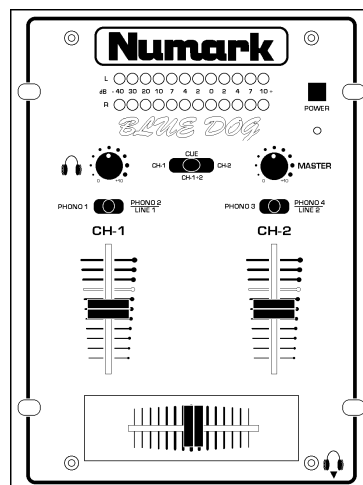
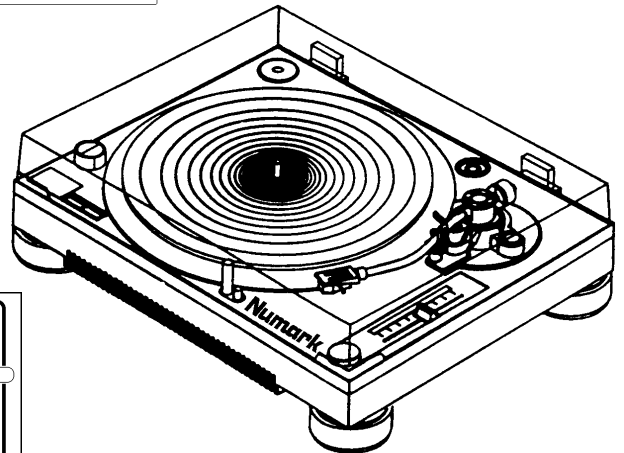
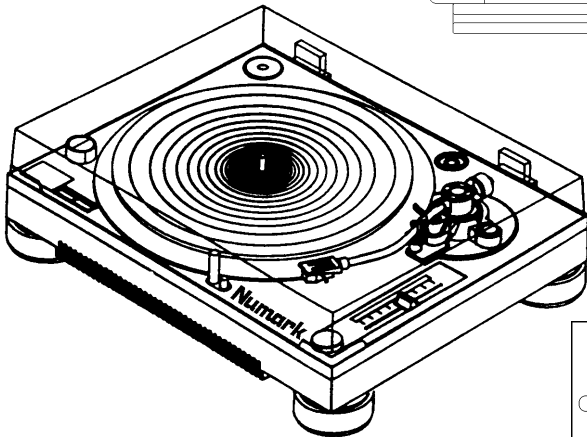
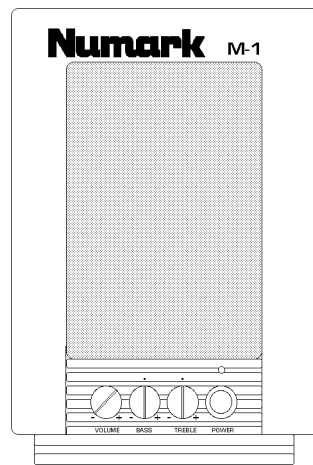
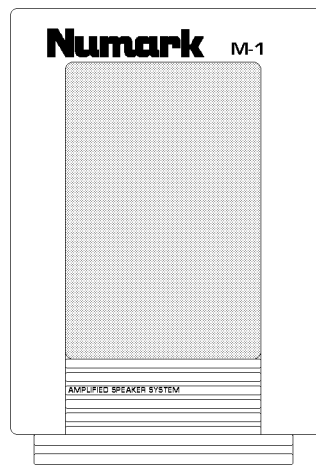


Numark

DJ IN A BOX™

series 2 EASY SETUP GUIDE



Numark INDUSTRIES
11 Helmsman Avenue,
North Kingstown, RI 02852

<http://www.numark.com>

What you will find in this box:

- 1 • Blue Dog DJ Mixer**
- 2 • TT1700 DJ Turntables**
- 2 • DJ Cartridges**
- 2 • DJ Slipmats**
- 1 • Pair of M-1 Self Powered Monitor Speakers**

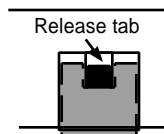
Be sure to fill out any registration cards you received in the boxes and mail them.

Please read the manual enclosed with each component to fully understand it's operation.

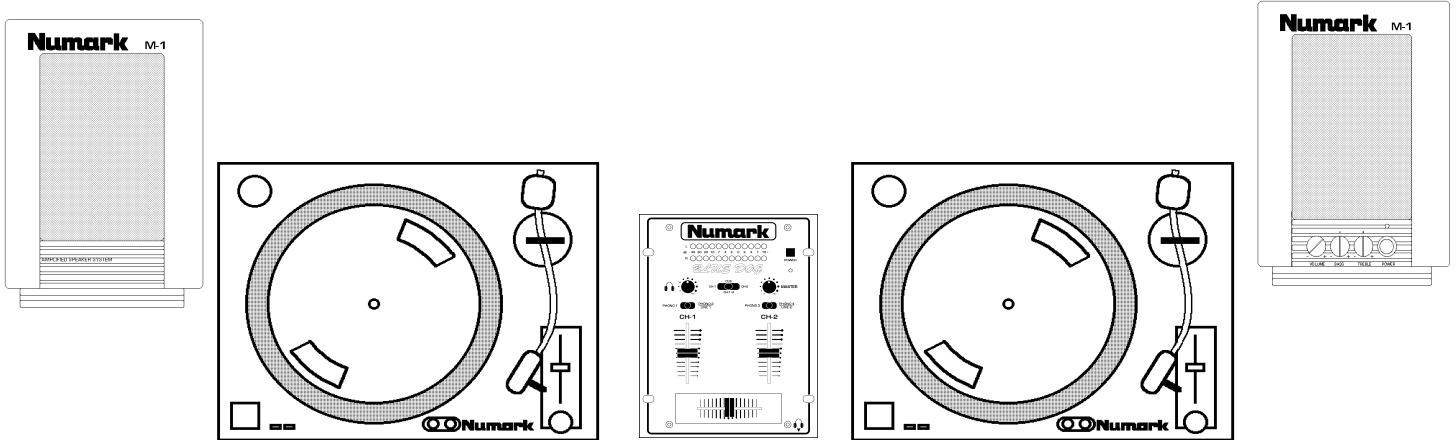
- 1. Find a level surface that is large enough to place your equipment on.**
- 2. Carefully remove the turntables from their packaging and set up the units following the inner box instructions!**

Notes:

- Be sure to take the belt that is already attached to the bottom of the platter and loop it around the belt drive spindle.**
- You will find the headshell with cartridge attached on the side of the foam packing material in the box. (SEE TURNTABLE INSTRUCTIONS)**
- The dust cover is not designed for continual removal. If you need to remove the cover; press both release tabs at the same time.**

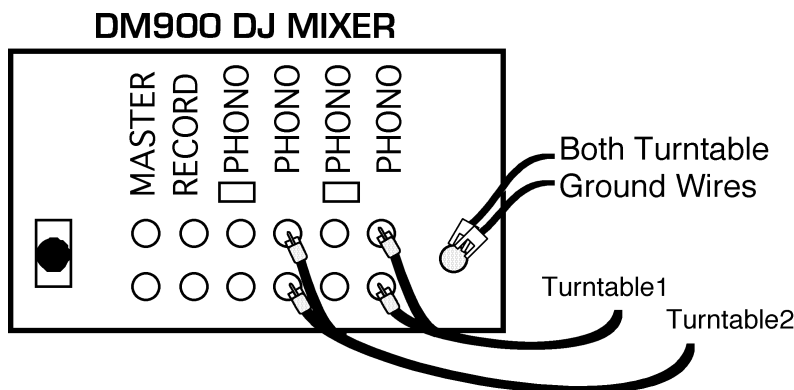


3. Remove your DM900 Blue Dog mixer from it's packaging and set all the components up on your working area as diagramed below.

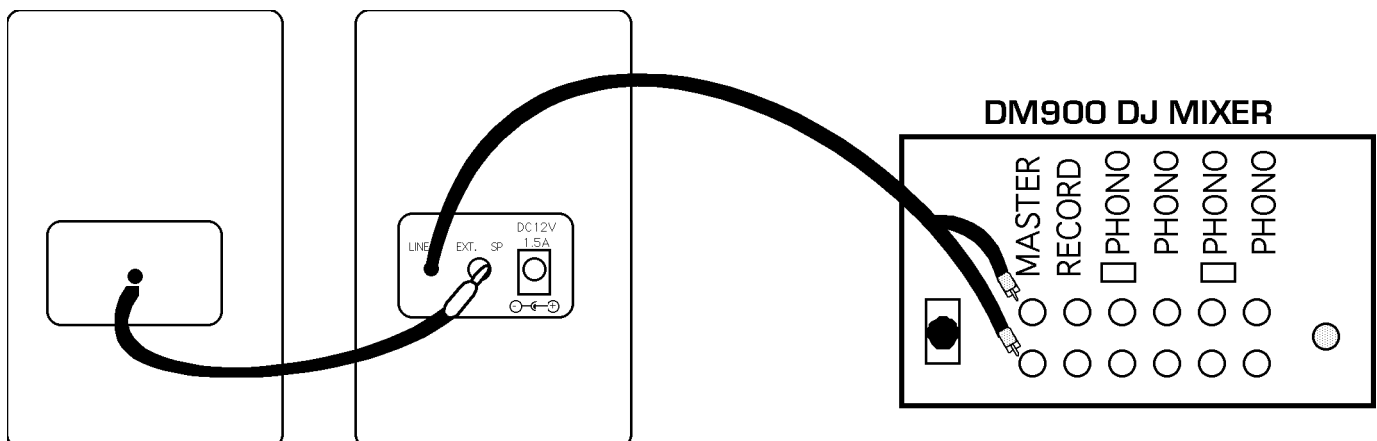


4. Fully read the setup instructions and precautions for the DM900 Blue Dog mixer.

5. Plug your audio and ground wires from your turntables into your mixer in the locations shown below.



6. Take rear cable attached to the M-1 monitor speaker with front panel controls and plug it into the main outputs of the mixer. Take the speaker cable attached to the second speaker and plug it into the speaker input of the first speaker



7. Plug in all the components of your new DJ system into an electrical outlet.

8. If you wish to record your mix, plug the input of your tape deck into the record output of the mixer.

9. TURN ON YOUR EQUIPMENT IN THIS ORDER

1. Turntables
2. Mixer
3. Speakers

• ALWAYS remember:

• ***“TURN SPEAKERS ON LAST AND OFF FIRST”***. Begin with master faders or volume controls on minimum and the amplifier gain/input control(s) down. Wait 8 to 10 seconds before turning up the volume. This prevents transients which may cause severe speaker damage.

TURN OFF YOUR EQUIPMENT IN THIS ORDER

1. Speakers
2. Mixer
3. Turntables

11. Follow the instruction for operation of your new equipment and start mixing !