

nord piano  
e i g h t y e i g h t

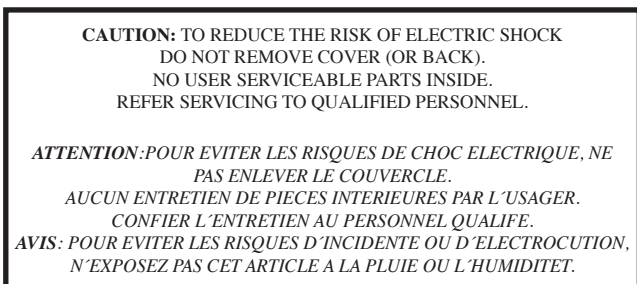
# User Manual Nord Piano

OS Version 1.x



The lightning flash with the arrowhead symbol within an equilateral triangle is intended to alert the user to the presence of uninsulated voltage within the products enclosure that may be of sufficient magnitude to constitute a risk of electric shock to persons.

*Le symbole éclair avec le point de flèche à l'intérieur d'un triangle équilatéral est utilisé pour alerter l'utilisateur de la présence à l'intérieur du coffret de "voltage dangereux" non isolé d'ampleur suffisante pour constituer un risque d'électrocution.*



The exclamation mark within an equilateral triangle is intended to alert the user to the presence of important operating and maintenance (servicing) instructions in the literature accompanying the product.

*Le point d'exclamation à l'intérieur d'un triangle équilatéral est employé pour alerter l'utilisateur de la présence d'instructions importantes pour le fonctionnement et l'entretien (service) dans le livret d'instructions accompagnant l'appareil.*

Instructions pertaining to a risk of fire, electric shock or injury to persons.

## IMPORTANT SAFETY INSTRUCTIONS

### SAVE THESE INSTRUCTIONS

**Warning** - When using electric products, basic precautions should always be followed, including the following:

- 1) Read these instructions.
- 2) Keep these instructions.
- 3) Heed all warnings.
- 4) Follow all instructions.
- 5) Do not use this apparatus near water.
- 6) Clean only with dry cloth.
- 7) Do not block any ventilation openings. Install in accordance with the manufacturer's instructions.
- 8) Do not install near any heat sources such as radiators, heat registers, stoves, or other apparatus (including amplifiers) that produce heat.
- 9) Do not defeat the safety purpose of the polarized or grounding-type plug. A polarized plug has two blades with one wider than the other. A grounding type plug has two blades and a third grounding prong. The wide blade or the third prong are provided for your safety. If the provided plug does not fit into your outlet, consult an electrician for replacement of the obsolete outlet.
- 10) Protect the power cord from being walked on or pinched particularly at plugs, convenience receptacles, and the point where they exit from the apparatus.
- 11) Only use attachments/accessories specified by the manufacturer.
- 12) Use only with the cart, stand, tripod, bracket, or table specified by the manufacturer, or sold with the apparatus. When a cart is used, use caution when moving the cart/apparatus combination to avoid injury from tip-over.
- 13) Unplug this apparatus during lightning storms or when unused for long periods of time.
- 14) Refer all servicing to qualified service personnel. Servicing is required when the apparatus has been damaged in any way, such as power-supply cord or plug is damaged, liquid has been spilled or objects have fallen into the apparatus, the apparatus has been exposed to rain or moisture, does not operate normally, or has been dropped.



### Additional Safety Information

No naked flame sources, such as lighted candles, should be placed on the apparatus;

Do not use the apparatus in tropical climates.

**WARNING:** To reduce the risk of fire or electric shock, do not expose this apparatus to rain or moisture.

The apparatus shall not be exposed to dripping or splashing and that no objects filled with liquids, such as vases, shall be placed on the apparatus.

The mains plug is used as the disconnect device and shall remain readily operable.

Il convient de ne pas placer sur l'appareil de sources de flammes nues, telles que des bougies allumées;

L'appareil n'est pas destiné à être utilisé sous un climat tropical.

L'appareil ne doit pas être exposé à des égouttements d'eau ou des éclaboussures et de plus qu'aucun objet rempli de liquide tel que des vases ne doit être placé sur l'appareil.

Lorsque la prise du réseau d'alimentation est utilisée comme dispositif de déconnexion, ce dispositif doit demeurer aisément accessible.

**Trademarks:** The Nord logo is trademark of Clavia DMI AB. All other trademarks mentioned in this publication are the properties of their respective holders.

Specifications and appearances are subject to change without notice.

Copyright © Clavia DMI AB



# Nord Piano User Manual

## 1 Introduction

<b>Thank you!</b> .....	4
<b>About this manual</b> .....	4
<b>OS and internal memory</b> .....	4
<b>Factory programs</b> .....	4
Restoring the factory presets .....	4
<b>OS upgrades</b> .....	4
<b>Free sounds</b> .....	4
<b>Disclaimer</b> .....	4

## 2 About the Nord Piano

<b>The Piano</b> .....	5
<b>Piano Library V5</b> .....	5
Small, Medium & Large .....	5
<b>String Resonance</b> .....	5
<b>Pedal Noise</b> .....	5

## 3 Overview

<b>Knobs &amp; buttons</b> .....	6
Knobs .....	6
Selector buttons .....	6
On/Off buttons .....	6
Shift button .....	6

## 4 Connections

<b>Audio connections</b> .....	7
Headphones .....	7
Left Out and Right Out .....	7
Monitor In .....	7
<b>USB Connection</b> .....	7
<b>MIDI Connections</b> .....	7
MIDI In .....	7
MIDI Out .....	7
<b>Music Stand</b> .....	7
<b>Pedal Connection</b> .....	8

## 5 Getting Started

<b>About the programs</b> .....	9
<b>Select a program</b> .....	9
<b>Edit a program</b> .....	9
<b>Memory Protection</b> .....	9
<b>Storing a program</b> .....	9
<b>Live Mode</b> .....	10
<b>Selecting a piano</b> .....	10
<b>Transpose</b> .....	10
<b>Adding effects</b> .....	10
Let's try a wah effect .....	10
Activate an amplifier emulation .....	10
<b>Acoustics</b> .....	11
<b>Kbd Touch settings</b> .....	11

## 6 Nord Piano Reference

Master level .....	12
MIDI Indicator .....	12
Shift .....	12
<b>Program Bank section</b> .....	12
Up/Down buttons .....	12
Display .....	12
Store .....	12
Store As .....	12
Live Mode .....	13
Programs 1 ~ 5 .....	13
Panic .....	13
<b>Piano section</b> .....	13
Piano Type .....	13
Piano Model .....	13
Transpose Set .....	13
Transpose Clear .....	14
Kbd Touch .....	14
Mono Output .....	14
Acoustics .....	14
String Resonance .....	14
Pedal Noise .....	14
<b>Effects</b> .....	14
Effects 1 and 2 .....	14
Effect 1 .....	15
Effect 2 .....	15
Equalizer .....	15
Amp/Comp .....	15
Reverb .....	15

## 7 The Menus

<b>System Menu</b> .....	16
Memory Protect – On, Off .....	16
Fine Tune .....	16
Global Transpose .....	16
<b>MIDI Menu</b> .....	16
MIDI Channel .....	16
Local Control .....	16
Control Change (CC) Mode .....	16
Program Change Mode .....	16
Send Ctrl .....	16
Dump One .....	16
Dump All .....	17
<b>Sound Menu</b> .....	17
Pedal Noise level .....	17
String Resonance Level .....	17
<b>Pedal Menu</b> .....	17
Piano Pedal .....	17

## 8 Nord Sound Manager

System requirements .....	18
<b>Installation</b> .....	18
USB Driver .....	18
Sound Manager .....	18
<b>Overview</b> .....	18
The Toolbar .....	19
The Tabs .....	19
Partition Memory Indicator .....	19
Right-Clicking .....	19
File Formats .....	19
<b>The Quick Tour</b> .....	20
Transfer pianos to the Piano .....	20
Deleting a piano .....	20
Download a new sound .....	20
Upload sounds from the Nord Piano .....	20
Upload a complete partition .....	20
Download sounds to the Nord Piano .....	20
Organize the program partition .....	21
Search Box .....	21
Auto Select .....	21
<b>Sound Manager reference</b> .....	21
Toolbar .....	21
<b>Menus</b> .....	22
File .....	22
Edit .....	23
View .....	23
Help .....	23
<b>Tabs</b> .....	23
Piano – Program .....	23
Search Box .....	23
Loc – Location .....	23
Name .....	23
Category .....	23
Size .....	23
Ver – Version Number .....	23
Info .....	23
Footer Area .....	24
Partition Memory Indicator .....	24
Cancel Button .....	24
Progress Bars .....	24
Message/Text Area .....	24
Updates and pianos .....	24

## 9 MIDI

<b>About the MIDI imp.</b> .....	25
Note On/Off .....	25
Controllers .....	25
Keyboard velocity .....	25
Program change .....	25
MIDI Sysex (System Exclusive) .....	25
<b>Nord Piano with a sequencer</b> .....	25
Connections .....	25
Local On/Off .....	25
MIDI Channel .....	25
Program Change .....	25
Controllers .....	25
About controllers & "chasing" .....	25
<b>Program &amp; Controller dumps</b> .....	26
Sending program dumps .....	26
Sending MIDI Controller dumps .....	26
Receive MIDI SysEx dumps .....	26
MIDI Controller list .....	26
MIDI Implementation Chart .....	27

## 10 Index

Index .....	28
-------------	----

# 1 Introduction

## Thank you!

We'd first like to thank you for purchasing the Nord Piano. Our goal when we developed the Nord Piano was to create the best professional, portable stage piano on the market. We hope that you will have as much fun owning, playing and using the instrument, as we had developing it.

## About this manual

You are probably very eager to start using your new instrument, and we sure don't want to keep you from having fun. We will try to cover all the essential aspects on how to use the Nord Piano in the very first few pages of this manual. After that follows the reference section where all the functions are explained in detail.

## OS and internal memory

The operating system, programs and pianos in the Nord Piano are stored in a Flash memory. A Flash memory is a great thing, it retains the data when the power is turned off. Another big advantage is that you can replace data in the Flash memory at any time. This means that you will be able to download upgrades, pianos and programs to your Nord Piano from a computer. The Nord Piano features a USB port for quick and easy download of new pianos.

## Factory programs

The internal program memory of the Nord Piano consists of 120 programs, organized in 24 banks with 5 programs in each bank. There are also five Live buffer memories, which will continuously store any changes as they are made, and remember these settings after the power is turned off.

All of the 120 programs in the Nord Piano can be used to store your own settings. To make sure you don't accidentally overwrite programs you want to keep, it's a good idea to back up your sounds regularly on a computer using the Nord Sound Manager application.

## Restoring the factory presets

The factory programs and pianos are available as Nord Sound Manager backup files for download at the Nord web site at [www.nordkeyboards.com](http://www.nordkeyboards.com) or on the included Nord Piano DVD.

## OS upgrades

The latest OS version for Nord Piano is available for download at the [www.nordkeyboards.com](http://www.nordkeyboards.com) website. Please visit our website from time to time, to make sure you have the latest version in your unit.

## Free sounds

Since the Nord Piano is designed as an "open system", each and every piano in the Nord Piano can be replaced by you. This is done using the free Nord Sound Manager application.

The Nord Piano is compatible with the continuously expanding Nord Piano Library. Many of these pianos are included on the DVD that accompanies the Piano. When new sounds are available, you can download these for free from the [www.nordkeyboards.com](http://www.nordkeyboards.com) website. Yet another good reason to visit the website from time to time.

## Disclaimer

Any trademarks and brand names mentioned in this manual are the property of their respective owners and are not affiliated or associated with Clavia. These trademarks and brand names are only mentioned to describe the types of sounds reproduced by Nord Piano.

# 2 About the Nord Piano

## The Piano

A great piano sound and maximum expressiveness is what it is all about. No compromises, just a good selection of outstanding piano and harpsichord sounds with true feel, with a natural keyboard response and authentic sound quality. To make a great tool we believe that you have to put all the focus on a few important things and that is exactly what we have tried to achieve.

Let's look at some of the key features:

## Piano Library V5

The Nord Piano is compatible with version 5 of the piano sounds in the Nord Piano Library. We have spent a lot of time and effort in creating our best piano sounds ever, to match the features available in the Piano.

The piano sounds are included on the DVD and are organized in categories and in some cases available in various sizes (for the acoustic grands and uprights). New sounds will be available free of charge on the [www.nordkeyboards.com](http://www.nordkeyboards.com) website.

## Small, Medium & Large

All three sizes share the same amount of velocity layers, and the same number of zones that are mapped across the keyboard. This means that you can rely on a consistent quality in regards to the playability and expressiveness in the basic sound of every piano, no matter what size you choose to install in your Nord Piano Library compatible unit.

Sml is the version that uses the least amount of space in the piano memory, but still carry a big and powerful punch. This version does not contain any String Resonance samples at all. If an Sml piano is selected in the Nord Piano, the String Resonance feature will be disabled.

The Medium versions have pedal-down String Resonance samples in the important middle region of the range, but omit these in the lowest and the highest areas. This gives you a good ratio of functionality and size.

The Large versions have the pedal-down String Resonance samples all across the keyboard, providing you with the fullest of sounds, but also the largest size.

## String Resonance

String Resonance is the acoustic phenomenon that occurs inside an acoustic piano or grand when strings, or parts of strings, resonate at their fundamental or harmonic frequencies when other strings are played.

When this functionality is turned on using the Nord Piano's acoustic pianos, all notes you play will affect each other to reproduce the wonderful acoustics that occurs inside an acoustic grand or upright piano.

String Resonance is also very noticeable if you use the sustain pedal with the String Resonance feature enabled, on any Medium and Large acoustic pianos. The notes that you play will have a beautiful sound quality to them, when all the un-dampened strings resonate as you play sustained notes.

Another thing that the String Resonance produces is a crescendo effect. If you play the same key repeatedly with the same force, the sound will change. This is originally caused by the hammers hitting the vibrating string in various phases, and creates a nice, gentle fluctuation in volume and timbre in the Nord Piano.

## Pedal Noise

The included Piano Pedal offers an unprecedented functionality, with the addition of a dynamic control of the mechanical noise during operation, and the ability for you as a player to use half pedaling and "release and catch again" techniques.

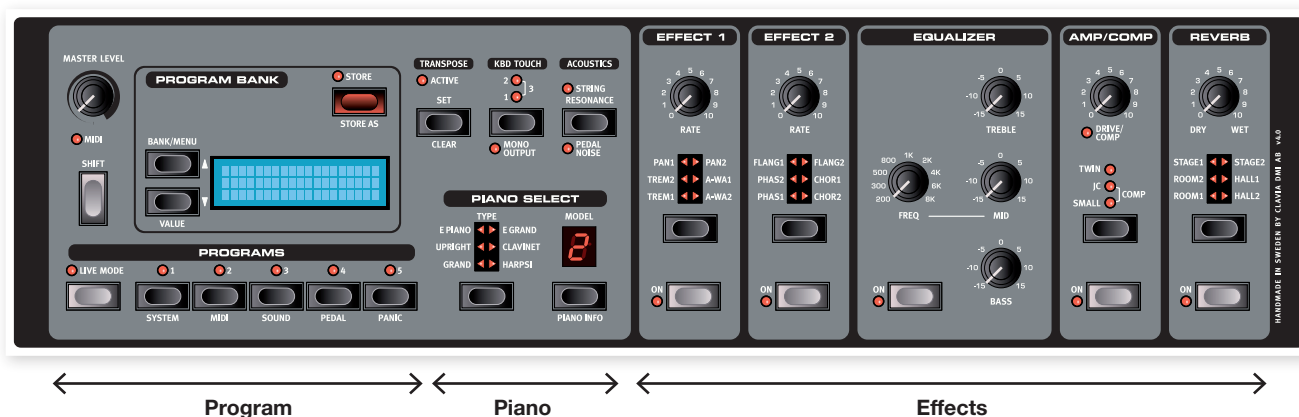
When the sustain pedal is operated on a acoustic grand or upright, many different sounds are produced by the mechanical components, several of the sounds can be reproduced by the Nord Piano.

When the dampers are lifted from the strings when the sustain pedal is pressed down, a beautiful sizzle can be heard. When you remove the foot from the pedal, the dampers are returned on to the strings, which creates a different, muted type of sound. Since the pedal is dynamic, you can experiment with various forces in pressing, and also in releasing the pedal. If you just slip your foot of the sustain pedal, allowing the return spring to spring with full force, a noticeable sound will appear.

The "floor sound" is heard when the pedal reaches the bottom of its travel. You can experience this in isolation if you press down the pedal completely, then lift it less than halfway back up and then press down again.

If you lift the pedal and immediately press it down again, a very rich sound will be heard. Another big sound is The Stomp, which requires you to start with your foot above the actual pedal, in order to be able to reach the high velocity that is required to get this sound.

# 3 Overview



The front panel of the Nord Piano has three main areas, Program, Piano, and Effects. We'll familiarize ourselves briefly with the panel here and describe the functions in detail in the following chapters.

On the left upper part of the panel are the Master Level knob that controls the entire instrument's output level at the two output jacks and the headphone output. This control is not programmable.

The Program Bank section contains the display and the functions that are used to select and store the programs, to set the System, Sound, MIDI and Pedal functions. We'll describe this area in greater detail starting at page 14.

Moving towards the middle of the panel, to the left of the display is the Piano section where you select the actual piano sounds.

The Effect section contains the functions of the effects. Please refer to page 14 and onwards for more information.

## Knobs & buttons

### Knobs

The knobs control the continuously variable parameters in the Nord Piano.

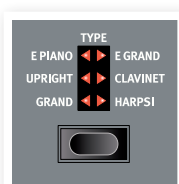
- i A parameter value can be totally different from the knob's physical position when you load a Program. As soon as you start turning the knob, the value will 'snap' to the knob's physical position.



### Selector buttons

Selector buttons are used to select one setting in an array. Selector buttons have a set of round or triangular LEDs to indicate the current setting. Press the button several times to cycle through the possible options.

- 💡 Holding Shift and pressing a selector button (with the exception of the Type button) will cycle through the settings in a counter clockwise fashion.



### On/Off buttons

On/Off buttons are used for activating a parameter or a group of parameters such as effects.



### Shift button

Some buttons have a secondary function, which will be available if you hold down Shift while pressing the button. The name of the secondary function is printed below the button. Shift is also used together with the Up/Down buttons when you want to change a setting in the System, MIDI or Sound menus.



- 💡 If you press and hold Shift while turning a knob, the parameter value will be presented in the display, without being changed.

# 4 Connections



## Audio connections

### Headphones

This is where you connect a 1/4" stereo connector from a pair of headphones.

### Left Out and Right Out

The left and right line level outputs from the Nord Piano are unbalanced. Use 1/4" connectors to connect the Nord Piano to an amplifier or recording equipment.

The Nord Piano is a stereo instrument, with separate signal paths for the left and right audio channels. To properly experience the Piano, use both outputs in a stereo operation.

General guide on audio connections:

- Make all the connections before you turn on the power to your amplifier.
- Turn on the power to your amplifier last.
- Turn off the power to your amplifier first.

⚠ *Playing at a high volume level can result in hearing impairments such as permanent hearing loss.*

### Monitor In

Use this to connect and monitor a signal from an mp3 or a CD player at the Nord Piano's headphone output. This allows you to e.g. rehearse with the Piano to pre-recorded music.

ⓘ *Signals connected to this input will not be processed with the Piano's effects or appear at the Piano's left and right output jacks.*

## USB Connection

The USB connection is used for the Nord Piano to communicate with a personal computer in order to update the OS or to add or replace any of the piano sounds. The computer can run the Nord Sound Manager application, or be used to transfer the operating system if the unit needs to be updated.

The Nord Piano can also transmit and receive MIDI data via the USB interface, read more about this in the MIDI chapter.

ⓘ *Computers running Microsoft Windows operating systems need a driver for the USB connection to work. The installer for the driver can be found on the enclosed Nord DVD, or at the [www.nordkeyboards.com](http://www.nordkeyboards.com) website.*

## MIDI Connections

### MIDI In

MIDI connection used to receive MIDI data to the Nord Piano from other equipment such as keyboards or computers.

### MIDI Out

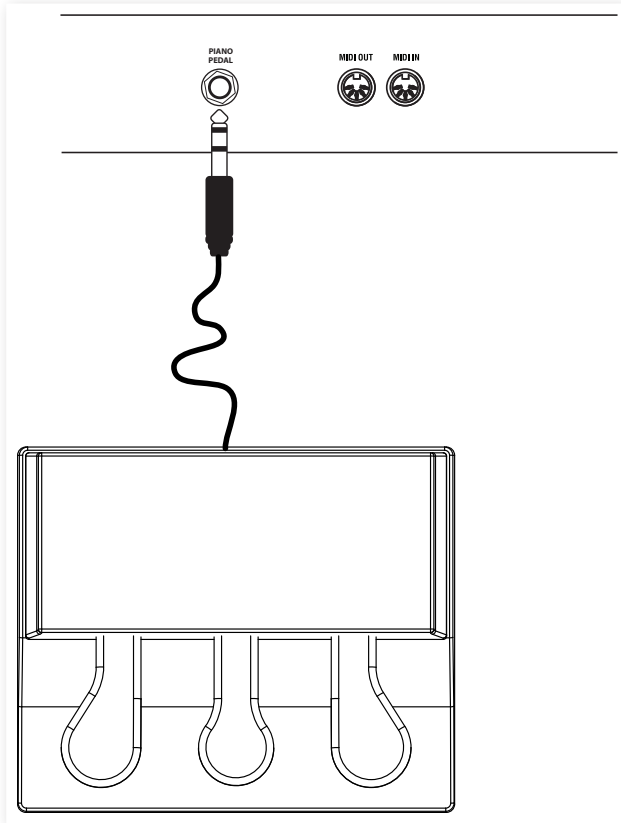
MIDI connection used for sending keyboard- and panel generated MIDI data from the Nord Piano to other equipment such as sound modules or computers.

## Music Stand

The rear panel on the Nord Piano has two brackets where the Music Stand (optional accessory) can be mounted.

## Pedal Connection

The Nord Piano has one input for the Nord Piano Pedal. If this pedal is unavailable, you can use a standard sustain pedal.



- 1 Connect the 1/4" stereo connector from the Nord Piano Pedal to the Piano Pedal connector on the Nord Piano.

## Piano Pedal

The Nord Piano Pedal has the functionality of three pedals in one unit.

The right pedal is the sustain pedal. If you operate this, all the notes that you play will sustain until the pedal is released again. This pedal can also introduce the pedal noise functionality, and it can be used with half pedaling techniques by pressing it down for parts of its travel on certain pianos.

The left pedal is the soft pedal, also known as the Una Corda. When you press this pedal, all the notes you play will be slightly lower in volume and also have a slightly more subdued tone quality.

The middle pedal is the Sostenuto. By using this pedal, you can sustain selected notes, while other notes remain unaffected. Only the notes that are held down when the pedal is operated will sustain. Other notes that you play while keeping the pedal down will sound as if no pedal was operated at all.

- If the Nord Piano Pedal is unavailable, you can use a standard sustain- or foot switch type pedal from almost any other manufacturer. In order for the functionality to be correct, you may have to change a setting in the Pedal menu. Read more about this on page 17.

# 5 Getting Started

Let's take a few minutes to get familiar with the Nord Piano. The user interface is designed to be as intuitive as possible, and to perform as well as you do in a live situation. We hope that you soon will feel confident in using it, and by following this short chapter, we will go through most of the functions.

## About the programs

Complete settings of every function on the panel are stored in the Program memory of the Nord Piano. This memory area has 120 locations that are organized in 24 banks, with 5 programs in each bank. Every program can be edited and replaced as you wish. A complete set of the factory programs are available on the Nord DVD and on our website.

## Select a program

Programs are selected by pressing the five Program buttons, located below the display. Press the Up or Down button repeatedly, located to the left of the display, to select the desired bank number. When you've changed the Bank, the program will be loaded immediately.

Press and hold the Up or Down buttons to continuously scroll through the banks.



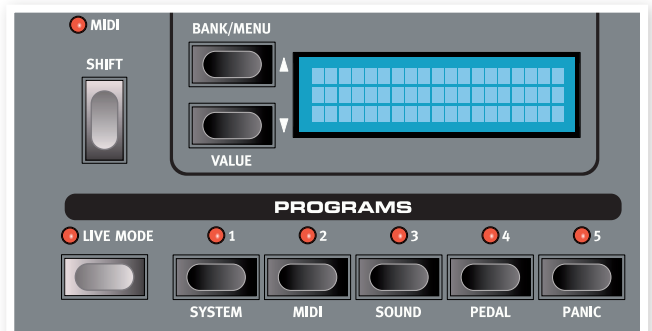
## Edit a program

Editing a program is just as easy as grabbing a knob and change a setting, or press a button to select a different setting. The knob's physical position isn't always as the stored setting in the program that is active, but as soon as you start turning a knob, the parameter will snap to the knob's position.

When you have edited a program, an asterisk will appear in the display next to the program number. This will alert you to the fact that the program has been edited but not yet saved. If you select a new program without saving, any edits you have made will be lost and the program will have its original settings the next time you select it.

## Memory Protection

If you are happy with an edit that you have made, you should probably save or Store the program. But before you can do this, we need to turn off the Memory Protect function.



1 Press Shift + System and use the Up/Down buttons to select the Memory Protect Mode – this is the very first option in the System menu.

2 Set the memory protection to Off by pressing and holding Shift and the Down button.

Exit the System menu by pressing the Shift button again.

**i** The setting of the memory protection will be remembered even if the Nord Piano is turned off.

## Storing a program

Let's store a program.

1 Press the Store button once.

The Store LED starts flashing and the display will give you a visual indication of the location.

2 If you want to replace the previous program with your new settings, press the Store button again.

3 If you want to store your new settings in a different location, use the Bank and Program buttons to select a new location where you want to store the program.

**💡** The name of the new destination will be shown in the display. You can also check the sound/settings of that program itself by playing on the Nord Piano. This prevents you from overwriting a program that you want to keep.



- ④ Press the Store button a second time to confirm your intention.

The edited program has now replaced the previous one in the location you specified.

- ❗ *To cancel the storing procedure, press any button except for the Bank, Live Mode or Program buttons.*
- ❗ *With Memory Protect set to Off, a double tap on the Store button will store a Program in its original location.*

## Live Mode



The Live Mode can be described as 5 “live program memories”. If you press the Live Mode button to turn Live Mode on, all changes to the panel settings you make will be continuously stored. If you switch the power off, or select another program, the settings you made are still stored in the 5 Live Mode programs, so when you power up next time (or return to that particular Live Mode program) all settings will be exactly as they were when you left them.

If the Live Mode is selected and you decide you wish to store the settings permanently as a program instead, you can do so using the standard methods (see above). You can also store programs into any one of the five Live Mode memory locations, in which case the program settings will replace that current Live Mode memory settings.

## Selecting a piano

- ① Press repeatedly on the Piano Type selector to cycle through the six types.

- ② Select the Grand and press the Piano Model button.

This allows you to select the various Grand's.

- ③ Press the Piano Type selector again until the E Piano is selected.

Use the Piano Model selector to select one of the electric pianos that are included in the Nord Piano from the factory.

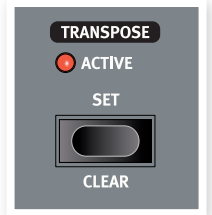
- ④ Press the Piano Model button repeatedly.

This allows you to select the various electric pianos.



## Transpose

Press and hold the Transpose button and use the Up and Down buttons to transpose the Nord Piano in semitone steps. The range is +/- 6 semitones. A transposition can be stored in a program.



- ❗ *The pianos have a finite note range, read more about this on page 14.*

## Adding effects

- ① Select a program, e.g. number 1:1 which is a Grand Piano.

- ② Turn on Effect 2 (the On LED should be lit) and press repeatedly on the Effect 2 selector.

The effect options are indicated with the selector LEDs and changes in a cyclical, clockwise fashion for each time the selector is pressed.

Some of the effects have three options that indicate the depth of the effect. Flang 1 is the shallowest version, Flang 2 is a more pronounced effect and when both Flang 1 and Flang 2 LEDs are lit, you have selected the most dramatic flanger effect.



- ③ Turn the Effect Rate knob.

This changes the rate of the active effect.

- ④ Hold Shift and press repeatedly on the effect selector.

This allows you to reverse through the effect selections.

- ⑤ Turn off the effect.

If you now continue to press on the effect selector after the effect is turned off, the effect setting will change even though the effect is not active.

💡 *This method can be used to select a certain effect while playing, without affecting the sound until you actually turn on the effect.*

## Let's try a wah effect

- ① Turn on Effect 1 and select the A-Wa1.

The A-Wa is a automatic, dynamic Wah-wah effect. It will affect the sound depending on the volume of the signal.

- ② Play a few notes with varying velocity while turning the Effect 1 knob.

## Activate an amplifier emulation

- ① Press the Amp/Comp button to turn on the amplifier emulation.

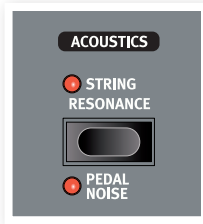
The Speaker/Comp LED will be lit.

- ② Press repeatedly on the selector to cycle through the various options.

The knob controls the drive for the three amps and the amount when the compressor is selected.

## Acoustics

- 1 Select a Grand piano by pressing the Piano Type selector.
- 2 Press the Acoustics button to turn on the String Resonance functionality if it not active already.
- 3 Play and hold a chord with your left hand, and while the sound decays, play some staccato notes with your right hand. You can hear that some of the new notes excites the held notes, making them “ring” in a sympathetic resonance.



String Resonance is the acoustic phenomenon that occurs when strings, or parts of strings, resonate at their fundamental or harmonic frequencies when other strings are played.

When this functionality is turned on, all notes you play will affect each other to reproduce the wonderful acoustics that occurs inside an acoustic grand or upright piano.

- 4 Press and hold the Shift button and press the Acoustics button to turn on the Pedal Noise feature.
- 5 Without playing any notes, step on the Nord Piano Pedal with various intensities. You can hear the pedal noise and how it changes according to the force.

By activating this, the mechanical noise that occurs when you operate the sustain pedal on a acoustic or electric piano will be recreated. The Nord Piano Pedal is dynamic, you can control the level of the noise by the force you use when you operate the sustain pedal.

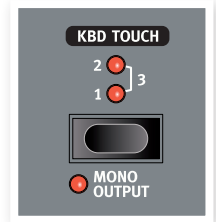
## Kbd Touch settings

The Nord Piano is equipped with three additional Kbd Touch settings.

Some of the piano instruments sampled for the Nord Piano have very wide dynamic ranges by nature and naturally we wanted to capture this as accurately as possible.

However, if you want the piano sounds to respond more easily to keyboard velocity, you can set this with the Kbd Touch feature.

When the LEDs are off, the default setting is active. Should you wish to reach the maximum velocity with a little less effort, press the Kbd Touch button so that the “1” LED is lit. If you press the button again, the “2” LED will be lit, making it even easier to reach the maximum velocity level. Unsurprisingly, the third level with both LEDs lit provides you with the lightest touch.



***This finishes our little tour; we hope that you now have the initial knowledge on how to operate most of the functions on the panel. The following chapter contains the reference section, with the chapter on the Nord Sound Manager application after that, on page 18.***

# 6 Nord Piano Reference

## Master level

This control sets the overall output level of the Nord Piano, at the L/R and the headphone outputs.

**i** This is not a programmable control.



## MIDI Indicator

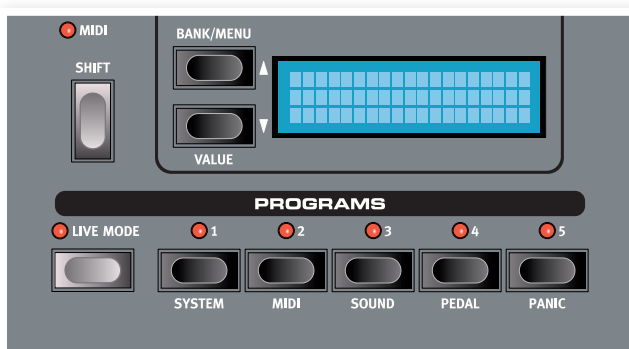
The MIDI indicator below the Master Level is a LED that flashes when MIDI data is received. Short flashes indicate any incoming MIDI, longer flashes indicates accepted MIDI data (on the correct MIDI channel etc.).

## Shift

A few buttons on the Nord Piano panel have a second function, which is indicated by a descriptive text printed that is below the button. You access these additional functions by holding Shift while pressing a button.



## Program Bank section



This is the section where you select the banks and programs, where the Store functions are activated and where you enter the system, MIDI, sound and pedal menus to change these settings.

## Up/Down buttons

The Up/Down buttons to the left of the display have several functions in the Nord Piano. Press repeatedly to select one of the 24 banks; the bank and program number and the name of the program will be presented in the display.

If you have entered any of the menus, the System, MIDI, Sound or Pedal menu, these buttons are then used to select a function, and together with the Shift button to change the value of a selected function. Read more about the menus on page 16.

## Display

The LCD will show the active program number, the name of the program and the name of the piano model that the programs uses. If you edit a program, an asterisk will appear next to the program number, at the upper left of the display.

If you have entered any of the menus, the setting for each menu item is shown in the LCD.

The LCD will also display values and settings when you change any of the functions on the panel. Press and hold shift while turning a knob to display its value without changing it.

## Store

The red Store button is used when you want to store the settings that you have made in Programs.



- 1 Press the Store button once and the Store LED will start to flash.

The display will ask you for a location where to store your new program - the first option is at the original location.

- 2 Select the desired location with the Up/Down and the Program 1-5 buttons. Skip this step if you want to overwrite the original.

**💡** When you select a new location, the name of the program currently in the destination will be displayed and the settings will also become active on the Nord Piano. This allows you to verify that you will not overwrite something important.

- 3 Press Store again to confirm your intentions and to store the current settings to the selected location.

If you change your mind, press any button except the Up/Down or the Program buttons on the Nord Piano panel to abort the store procedure.

## Store As

Use the Store As feature when you want to save a program with another name.

- 1 Press Shift + Store.

The display will show "Set Name" and the current name of the program on the lower row.

- 2 Use the Up/Down buttons to select the position, press and hold Shift and use the Up/Down buttons to select the character.

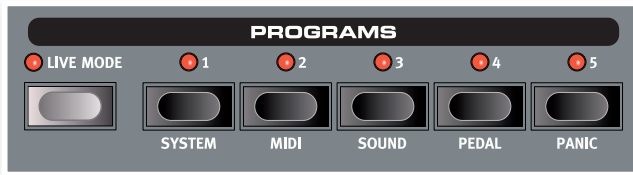
The display can show 11 characters of a program name.

- 3 Confirm your intentions by pressing Store once more.

This procedure may be aborted by pressing the Shift button.

**i** In order to be able to store settings the Memory Protection must be turned off. Read more about this on page 16.

## Live Mode



If you press the Live Mode button, all changes to the panel settings you make will be continuously saved in the currently active “Live Program”. If you switch the power off, or select another program, the settings are still stored in the Live memory, so when you power up next time (or return to the Live memory) all settings will be exactly as you left them. The Live Mode has 5 programs, which are selected with the Program buttons.

*If the Live memory is selected and you decide you wish to store the settings permanently as a program you can do so using the standard Store methods (see above). You can also store programs into the Live memory location, in which case the program settings will replace the current Live memory settings.*

## Programs 1 ~ 5

Use the Program buttons to select the individual programs in a bank or in the Live Mode.

By pressing Shift and program buttons 1 to 4, you’ll enter the menus. Read more about this on page 16.

## Panic

If notes gets stuck and sound indefinitely during a MIDI- or live performance, you can press Shift together with program button 5 in order to force every note to stop playing and to reset any performance controllers.

## Piano section



The Piano section of the Nord Piano is organized into six types; each type can contain several instrument models. You can freely add new piano instruments via USB using the Nord Sound Manager utility (see “Nord Sound Manager” on page 18).

Right out of the box, Nord Piano features a fine collection of carefully selected acoustic and electric pianos and harpsichords. A lot of effort was made to ensure that the response and sound of the instruments matches every nuance of the real article. Each piano instrument has been multi-sampled in a vast amount of velocity levels. That’s one reason why they all sound and feel so authentic.

## Piano Type

Use the Piano Type selector to choose which piano sound you want to use. Each type may consist of several models; press repeatedly on the model selector to cycle through the models within a selected type.

Type	Description
Grand	Acoustic grand pianos
Upright	Upright pianos
E Piano	Electric Pianos (tines and reeds)
E Grand	Electric grand pianos
Clavinet	Clavinet
Harpsi	Harpsichords

*The type of a piano has been determined by the Bith at the Nord HQ. You cannot move a piano from one type to another.*

## Piano Model

Each Piano Type can contain several Piano Models, depending on the content of the memory in the Nord Piano.

1 Press repeatedly on the Model button to select the desired sound.

The number of the model will be indicated in the LED display, and the name of the model will be shown in the display’s second row.

2 Press Shift and the Model button to see the name and version number of the active piano in the display.

*Flashing LEDs in the Piano Type and Model section indicates that the piano that the current Program tried to use is not available in the Flash memory. Select another program or download the missing piano to the Nord Piano.*

*If the data of a sound in the Flash memory is damaged, this will be indicated with a message in the LCD when the Nord Piano is powered up, and the Type and Model LEDs will flash for this particular sound if a program that uses it is selected. Connect the unit to the Sound Manager to delete and then reload the piano.*

## Clavinet

On an original Clavinet D6 you can select different pick-up combinations by pressing a number of rocker switches. This functionality is very faithfully simulated in the Nord Piano, which means that you get all the original Clavinet D6 pickup selections by pressing the Model button when the Clavinet is the selected Type.

### Pick-up Type Description

Clav Model A: Only the “neck” pick-up; a warmer, less bright sound.

Clav Model B: Only the “bridge” pick-up; a bright sound.

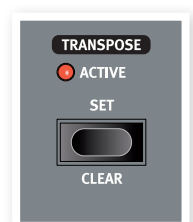
Clav Model C: Both pick-ups on and in phase; a very full sound.

Clav Model D: Both pick-ups 180 degrees out of phase; the fundamental is almost cancelled out and the sound becomes thin.

## Transpose Set

The Transpose functionality makes it possible to alter the pitch of the Nord Piano in semitone steps. This can be very useful if you want to “play” in one key, and have the Nord Piano “sound” in another. A setting that you make with this function will be saved within a program.

1 Press and hold the Transpose Set button.



② Set the desired transposition by pressing the Up or Down buttons.

③ The display will indicate the transposition value.

The Active LED will be lit whenever a transpose value have been set.

❗ *This transposition will also affect the MIDI output from the Nord Piano.*

❗ *In the System Menu, there is a global transpose that will affect all programs and all sounds in the Nord Piano, but not the MIDI output. Read more on this subject on page 16.*

⚠ *The piano sounds have a finite range. It is therefore possible to set the Transpose and/or the Global Transpose to values that will make keys at the top of the Nord Piano keyboard silent.*

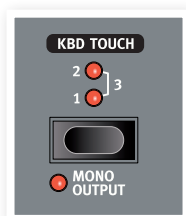
## Transpose Clear

① To clear a transpose setting, press and hold Shift and then press the Transpose button.

## Kbd Touch

By activating the Kbd Touch feature, you can select different response curves. These makes the Nord Piano react stronger to the velocity you use on the keyboard.

When all LEDs are off, the default response curve is active. A Kbd Touch setting of 1 makes it a bit easier to reach the maximum, a setting of 2, even easier and the third setting is the lightest response curve.



## Mono Output

If you press Shift + Mono, the stereo sound will be played back in mono instead.

❗ *This is a global setting and will affect the entire Nord Piano. The Mono functionality will be reset if the Nord Piano is turned off.*

## Acoustics

The Acoustics features allow you to add certain acoustic and mechanical components to the sounds.

## String Resonance

String Resonance is the acoustic phenomenon that occurs when strings, or parts of strings, resonate at their fundamental or harmonic frequencies when other strings are played.

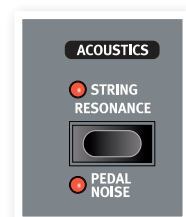
When this functionality is turned on, all notes you play will affect each other to reproduce the wonderful acoustics that occurs inside an acoustic grand or upright piano.

You will also hear all the strings resonate if you press the sustain pedal and play some notes.

① Press repeatedly to toggle the String Resonance on or off.

The String Resonance LED will be lit when the function is active.

❗ *If a piano is selected that isn't compatible with the Strings Resonance feature, this function will be disabled. This applies to e.g. the small (Sm) versions of the grands and uprights.*



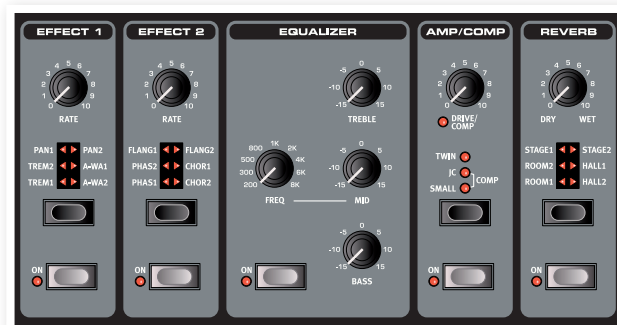
## Pedal Noise

The second Acoustics feature is the Pedal Noise. By activating this, you will recreate the mechanical noise that happens when you operate the sustain pedal on a acoustic piano. The Nord Piano Pedal is dynamic, you can control the level of the noise by the force you use when you operate the sustain pedal.

① Press and hold Shift, while pressing on the String Resonance button to turn this feature on or off.

❗ *If a piano is selected that isn't compatible with the Pedal Noise feature, this function will be disabled.*

## Effects



The Effects section of Nord Piano can be used for processing the piano sounds. It is programmable and you can configure your effects separately for each and every program.

## Effects 1 and 2

Effects 1 and 2 contain some very useful modulation and wah-effects.

① Press the Effects On button to turn the effect on or off.

The On LED will be lit when the Effect is active.

② Press the Effect Selector repeatedly to cycle through the various effects and/or effect depths.

💡 *Press and hold Shift and press an Effect selector to cycle through the effects in a counter clockwise fashion.*

③ Turn the Rate knob to change the rate of the effect.

A numerical value of the rate will be shown in the display.

💡 *You can use the Effect Selector to select an effect without it being turned on, in order to prepare a setting in advance during a performance.*

## Effect 1

Effect 1 offers three different types of effects: Tremolo, Auto-Panning, and 2 types of Wah-Wah.

The tremolo and the auto-panning have 3 selectable depths. Pan1 is less dramatic than Pan2, and Pan 3 (both Pan LEDs lit) is the most dramatic.

The Rate knob control the rate of the effect.

The A-Wa is a wah-effect where a lowpass filter sweeps across the frequency range, and is controlled by the volume of the signal. This means that you can use the velocity on the keyboard to control the amount of “Quack!” in the sound. The Rate knob sets the frequency range of the sweep.

A-Wa1 has a nice, mellow sound. A-Wa2 reacts a bit faster and gives you a brighter, more distinct character.

## Effect 2

Effect 2 offers three types of modulation effects: Phaser, Flanger and Chorus.

Each of these effects has 3 selectable depths in the same fashion as the tremolo and pan in the Effects 1 section. The Rate knob control the rate of the effect

## Equalizer

The Nord Piano has a 3-band EQ with treble, bass and a sweep-able midrange (4 kHz, 100 Hz and 200 Hz ~ 8 kHz). The frequency ranges can be boosted/attenuated with +/- 15 dB.

## Amp/Comp

This section contains the speaker/amp emulations and a compressor.

Small, JC and Twin emulates three different kinds of amplifier and speaker cabinets. The amount of drive is controlled by the Speaker/Comp knob .

Comp is a compressor that will even out the dynamics of what you play, making low level sounds louder and high level sounds lower in volume. This produces a tight, punchy sound and makes the overall level easier to control in a live mix situation.

When this effect is active, the Drive/Comp knob controls the amount of compression applied.

## Reverb

The Reverb section simulates the natural sound reflections in various acoustic environments. You can choose between six reverb types with various lengths and densities, indicated by the LEDs in the selector.

The Stage “1” is a softer version, the Stage “2” is a brighter version, etc..

The Dry/Wet knob sets the balance between the unprocessed and the processed signal.

# 7 The Menus

Any settings that you change in the System, MIDI, Sound or Pedal menus will take immediate effect on a global basis, and the settings will be stored until you change them the next time. Enter the menus by pressing and holding Shift and the System, MIDI, Sound or Pedal button (program buttons 1 to 4). Select a function with the Up/Down buttons and change the setting by pressing and holding Shift and the Up or Down button. Exit the menus by pressing a second time on the program buttons.

- ❗ *There is one exception, one menu setting that doesn't get automatically stored when you power off the Piano, and this is the MIDI Local On/Off setting. This always reverts to Local On every time the Nord Piano is powered up.*

## System Menu

### Memory Protect – On, Off

This is set to "On" when the Nord Piano leaves the factory, meaning that you cannot store any changes to the programs. Set this to Off when you wish to store your own programs. The System, MIDI or Sound menu settings and the Live memory are not protected by this setting.

*Range: On (default), Off*

### Fine Tune

This allows you to fine tune the pitch of the Nord Piano.

*Range: +/- 50 cent (default = 0).*

### Global Transpose

This allows you to transpose the entire Nord Piano in semitone steps. Any setting you make here will be added to the panel transpose that may be saved with the programs.

*Range: +/- 6 semitones (default = 0).*

## MIDI Menu

### MIDI Channel

This sets the MIDI Channel that the Nord Piano transmits and responds to. Use the U-settings if you want to transmit and receive keyboard and panel MIDI messages via USB.

*Range: 1-16, USB1 - USB16, Off (default = 1)*

### Local Control

This allows you to set if the Nord Piano keyboard and front panel controls should control internal Programs or only send note and controller messages via MIDI. Local On is the normal "mode". In Local Off mode, the front panel and keyboard action are transmitted via MIDI only and does not control the internal sound(s) directly.

*Range: On (default), Off*

- ❗ *Local defaults back to Local On every time the Nord Piano is powered on.*

### Control Change (CC) Mode

This setting specifies how the front panel's knobs and buttons are handled in the MIDI communication with MIDI Control Change messages. You can select if the panel controls should either send or receive, or both or if Control Change messages should be ignored.

*Range: Send/Recv (default), Receive, Send, Off*

### Program Change Mode

Specifies how the Nord Piano should handle MIDI Program Change messages.

*Range: Send/Recv (default), Receive, Send, Off*

### Send Ctrl

You can perform a dump of all the active Program's parameters as MIDI Control Change messages. Press the Store button to perform the dump.

### Dump One

This allows you to perform a MIDI SysEx dump of the currently selected Program. Press the Store button to perform the transmission.

## Dump All

This allows you to perform a MIDI SysEx dump of all the Programs in the Nord Piano. Press the Store button to perform the transmission.

In the MIDI chapter on page 25 is a description on how the Nord Piano receives a Sys Ex dump.

---

## Sound Menu

### Pedal Noise level

Sets the level of the Pedal Noise that can be turned on for selected pianos.

*Range: +/- 6 dB (0 dB default)*

### String Resonance Level

Sets the level of the String Resonance feature that can be turned on for selected acoustic pianos.

*Range: +/- 6 dB (0 dB default)*

---

## Pedal Menu

### Piano Pedal

Select the functionality of the sustain pedal you have attached to the Nord Piano. If you are unable to use the included Nord Piano Pedal, you can still achieve parts of the pedal functionality with another pedal.

If you have a switch pedal type of another brand (Roland DP-2, DP-6, Yamaha FC-4, M-Audio etc.), select the Sw.Open or Sw.Close option, depending on the polarity of the pedal.

*Type: Nord Piano (default), Sw.Open, Sw.Close*

# 8 Nord Sound Manager

The Nord Sound Manager is the application that allows you to organize the various memory areas, the partitions in the Nord Piano. It is also used to download pianos or programs to the Nord Piano or to upload any of these items - called sounds - from the Nord Piano memory to the computer hard drive. The Nord Sound Manager provides access to various methods to download the sounds to the unit and a function to backup and restore the entire Nord Piano memory.

## System requirements

The Nord Sound Manager is compatible with computers running Mac OSX 10.4 or later, Windows XP, Windows 7 and Windows Vista. If you run the Nord Sound Manager on a Windows computer, you also need a Clavia USB Driver of version 3.0 or later installed.

- ❶ *Nord Piano OS Updates, USB drivers and instructions on how to install these are available at the [www.nordkeyboards.com](http://www.nordkeyboards.com) website and on the DVD that accompanies this unit.*

## Installation

### USB Driver

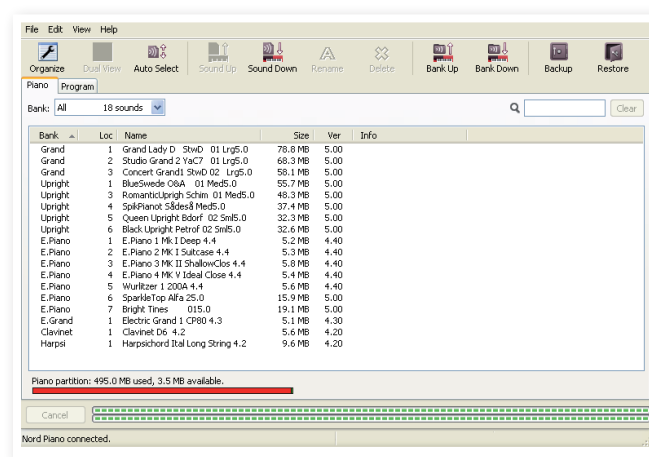
- ❶ *Mac OSX user may skip this section*

- 1 If you use a Windows computer (XP, Vista or 7), locate the Clavia USB Driver v3.0 Setup.exe on the DVD that accompanies the unit and double click on this file.
- 2 Follow the instructions on the screen.
- 3 After the files have been installed, the driver will be activated when you connect the Nord unit. Do this by connecting a USB cable between the Nord instrument and your computer.
- 4 When the Nord unit is connected to the computer, the driver will be automatically activated and a confirmation will appear in the notification area in the Windows task bar.

### Sound Manager

- 1 Windows users: Open the Nord Sound Manager folder on the DVD, launch the "Nord Sound Manager v5.x Setup.exe" and follow the instructions carefully. The Nord Sound Manager can be accessed from the start menu when the installation procedure is finished.
  - 2 Mac OSX users: Open the Nord Sound Manager folder on the DVD, double-click on the "Nord Sound Manager 5.x.dmg" and then drag the Nord Sound Manager application from the virtual hard drive to your "Applications" folder.
- ⚠ *The files mentioned for the driver and application installations can also be downloaded from the [www.nordkeyboards.com](http://www.nordkeyboards.com) website. Please visit our website from time to time to check for any updates.*

## Overview



*If no Nord Piano is connected to the computer, pages, icons and memory locations will be grayed out.*

- ⚠ *The actions that take place in the Nord Sound Manager will affect the memory in the Nord Piano. The Manager is on-line with a connected Nord Piano at all times; any changes that you perform in the Manager will immediately be executed in the Nord Piano. If you e.g. delete a piano or a Program from the list in the Nord Sound Manager, that same sound will also be deleted from the Nord Piano Flash memory.*

## The Toolbar




The Toolbar gives you direct access to some of the more frequently used functions in the Nord Sound Manager. Clicking on an icon will activate one of these functions, and a dialogue will often appear asking for confirmation or further instructions from you.

## The Tabs



Select the partition that you wish to work in with the Tabs. The Piano tab allows you to change the content of the piano partition and the Program tab allows you to organize the programs. The individual pianos or programs will be referred to as “sounds” in this manual and in the application itself.

 *Press Ctrl+Tab on the computer keyboard to cycle between the tabs.*

The lists can be ordered according to location, name, size, version and date, in ascending and descending order. Just click on a headline to select a preferred view.

## Partition Memory Indicator

The memory indicator at the bottom of the window indicates how much memory is being used in the selected partition. The red area shows the used memory, green indicates space that is available for new sounds.

## Right-Clicking

If you right-click on a sound, a context menu will provide the following options:

### Select in Instrument

This will select the chosen sound in the Manager list, to be instantly accessible on the Nord Piano.

### Upload

This will upload the selected sound from the Nord Piano to the computer hard drive to a folder of your choice.

### Download

This is only available if you right-click on an empty location that does not contain a sound. This allows you to choose a file on the hard drive, to be downloaded to the location in the Nord Piano.

#### Select In Instrument


Upload...

Download...

Delete

### Rename

This allows you to rename, and assign a category to a Program. Characters supported are: a-z, A-Z, 0-9 and a hyphen (-) and the name can contain up to 16 characters. Any other characters will not be displayed in the Sound Manager lists.


 *Pianos cannot be renamed, this option will not be available if you right-click on any of these.*

### Delete

This will delete the selected sound(s) from the Nord Piano memory.

## File Formats

The Nord Sound Manager creates and/or uses files with the Nord Piano, with the following extensions:

- .npno - These are the piano files from the Nord Piano library.
-  *The Nord Piano is only compatible with piano files of version 5 or later.*
- .nppg - These are the Program files.
- .npb - This is the extension used for the Nord Piano backup files.

Just as any other computer file on your hard drive, these files may be renamed, emailed, copied, moved, lost or even stored in a safe location if an evil computer crash suddenly decides to take your hard drive for ride.

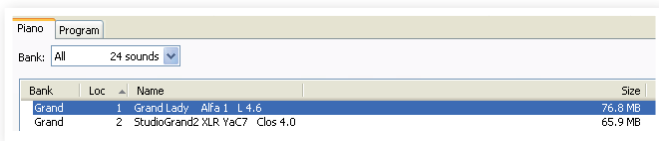
## The Quick Tour

Let's get acquainted with some of the functions in the Nord Sound Manager.

### Transfer pianos to the Piano

When the Nord Piano leaves the factory, the Piano partition is filled with sounds. In order to be able to download additional pianos, you may have to delete some of the factory pianos. If you ever want to reload any deleted pianos, they are available on the DVD that was included with the Nord Piano, or available as a download from the [www.nordkeyboards.com](http://www.nordkeyboards.com) web site, in the Libraries area.

### Deleting a piano

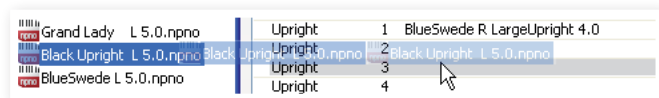


- Connect the Nord Piano to the computer and launch the Nord Sound Manager.
- The Piano tab will open and the current content of the piano partition in the Nord Piano will be displayed.
- Select a piano to delete and press the Delete icon in the toolbar.

You can also right-click on the sound and choose the Delete option or use the backspace or delete keys on the computer keyboard.

- You will be asked to confirm your intentions and then the piano in the Nord Piano will be deleted.

### Download a new sound



- Using drag and drop: Open the folder on the computer hard drive where the new sound is located.
- Make sure that the Sound Manager window and the folder are visible on the screen.
- Drag the new sound to the white area in the Sound Manager list. When the destination location will turn gray, release the mouse button.
- The Clean Deleted Space process will start to prepare the memory and then the new piano will be downloaded to the Nord Piano. If there isn't enough free space, a message will appear in the lower left text area in the Nord Sound Manager.

*If the Organize option is active in the View menu, you can drop a sound on any free location in the bank. If this function is not active, the new sound will be automatically placed at the first free location in the bank. The various locations are selected using the Model selector on the Nord Piano.*

- The pianos are categorized and can only be added to the correct bank; electric pianos can not be added to the grand bank, the grand's cannot be dropped in the clavinet bank etc.

- Using the Toolbar or Menu command: Click on the Sound Down icon in the toolbar. The same command is also available in the File menu: Sound Download (Ctrl-D).
- Browse to the folder on the hard drive where the desired sound is located, select it and click Open. The sound will now be added to its bank.

### Upload sounds from the Nord Piano

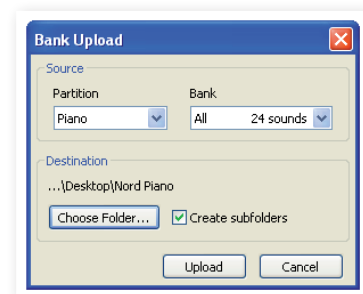
- Select the desired partition that holds the sounds that you wish to store on the computer hard drive.
- Select the bank and the sound. Shift-click will allow you to select several consecutive sounds; Ctrl-click will allow you to select nonconsecutive sounds. Here we have selected a few of the programs:

Loc	Name	Categor
1	The Grand	Grand
2	Eltons Piano	Grand
3	ZawiTimes	EPiano
4	SparkleTop	EPiano
5	HardTimes	EPiano

- Click on the Sound Up tool or right-click on the selected sound(s) and select Upload. The dialogue will prompt you to browse to the desired destination folder on the hard drive. The upload process may take a few moments depending on the size of the sounds.

### Upload a complete partition

- Make sure that the desired partition (and bank) is focused in the Nord Sound Manager. You will also have the opportunity to change the source bank in an upcoming dialogue.
- Click on the Bank Up tool, or select the File/Bank Upload menu command (Ctrl-Shift-U). Verify that the source bank is correct and browse to the desired destination folder on the computer hard drive.



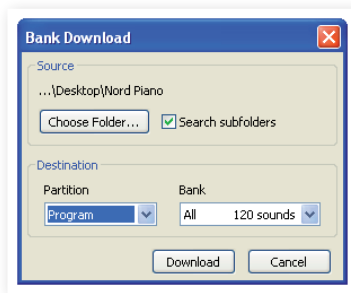
You can also select All at the bottom of the bank list drop down. This will upload the entire content of the partition to the computer hard drive.

If the Create Subfolders option is checked, a folder structure - partition/bank/sounds - will automatically be created in the destination folder.

### Download sounds to the Nord Piano

- Click on the Bank Down tool, or select the File/Bank Download menu command (Ctrl-Shift-D).
- Verify that the destination bank is correct and browse to the desired source folder on the computer hard drive.

- ❗ When you click on Download a dialogue appears to inform you that the content of the destination bank in the Nord Piano will be replaced with that of the source file.



If you select All in the destination bank drop down, you can replace all the sounds in a partition with those on a folder structure on the hard drive. If Search Subfolders is active, you can browse to the top folder of a structure as the parent of the source files.

## Organize the program partition

By using drag and drop, you can organize the content of the Program partition with its 120 programs.

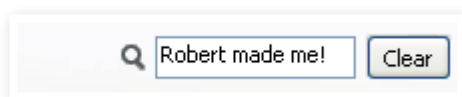
- 1 Make sure that Organize is turned on in the View menu.
- 2 Select and drag a program from the destination location to the desired location.

If you drop a sound on a free location, the sound will be moved from the source location. If you drop on a location that is occupied, the two sounds will trade places.

- 3 Select a program and press the Ctrl-key on the computer keyboard. If you now drag this selection, the Program will be copied and pasted at the destination instead of just being moved.

## Search Box

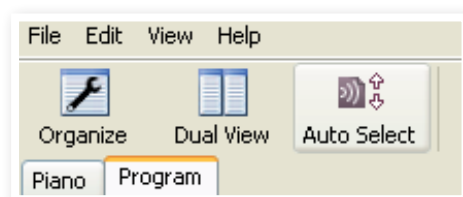
- 1 By entering one or several characters in the Search Box, you can filter out the content that is presented in the lists.



This provides you with a quick way to find duplicate programs, etc..

## Auto Select

By clicking on the Auto Select icon in the toolbar, you toggle the Auto Select function on or off.

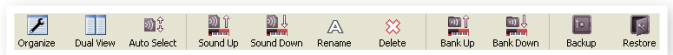


When Auto Select is turned on and you scroll through the Pianos or Program lists using the computer keyboard arrow keys, the sounds will automatically be selected in the Nord Piano.

- 💡 Double-clicking on a Piano or Program will also select it in the Nord Piano.

# Sound Manager reference

## Toolbar



### Organize

When this option is active, the lists will show all the available locations in the selected partition/bank and not only the occupied ones. This will for instance make it possible to drag a file to a specific free location in the middle of the list. If this is inactive, only the occupied locations will be shown and re-arranging the order is not possible.

### Dual View

When this option is checked, the window (if set to display the Program partition) will be divided in two lists. You can make the lists show separate banks with the drop-downs. Rearranging programs is simply a matter of drag and drop. Drag a program from one bank/list to another bank/list in either direction.

### Auto Select

With this function active, scrolling through the piano or program list with the computer keyboard arrow keys will automatically select the sound in the Nord Piano.

### Sound Up

Use this function to upload one or several sounds from the Nord Piano to the computer hard drive.

### Sound Down

Use this function to download one or several sounds from the computer hard drive to the next available location in the selected partition.

### Rename

This allows you to rename a Program. 16 characters can be used, and the supported characters are: a-z, AZ, 0-9 and the hyphen (-). Any other characters will not be displayed in the Sound Manager lists.

- ❗ Pianos cannot be renamed so this function is not available if you have selected any of these.

### Delete

Allows you to delete one or several selected sounds. You will be asked to confirm your intentions. You may also use the delete or backspace key on the computer keyboard to perform this action.

- ❗ Any Program in the Nord Piano that used a particular piano that you deleted will probably not sound at all, since it will be missing an important component.

The space that a deleted piano occupied is not immediately available to other sounds, even though it is gone from the list and its location is free. The Flash memory needs to be cleaned to free up the space where the deleted sounds have been. When you add a new piano the cleaning process will be initiated automatically. You also have the option to manually start the cleaning process with the Clean Deleted Space command from the File menu.

- ❗ Flashing LEDs in the Piano Type and Model section indicates that the piano that the current Program tried to use is not available in the Flash memory. Select another program or download the missing piano to the Nord Piano.

### Bank Up

This function will upload an entire bank of pianos or programs to the computer hard drive. The default source will be the currently active bank, but you may choose another partition and bank if you wish. Click on the Choose Folder button to select the destination on the hard drive.

If the Create Subfolders option is checked, a folder structure will automatically be created in the destination folder.

- ❗ *If a folder with the same name as the source partition/bank already exists in the location on the hard drive, this folder's entire content will be replaced by the uploaded files from the Nord Piano.*

### Bank Down

This function will download an entire bank of pianos or programs from the computer hard drive to the Nord Piano. The default destination will be the currently active bank, but you may choose another partition and bank if you wish. Click on the Choose Folder button to select the source on the hard drive.

- ⚠ *The destination bank in the Nord Piano will be replaced by the content of the source folder.*

### Backup

This will make a backup of all the pianos, programs, Live programs and the menu settings in the Nord Piano. The file that is created on the hard drive will have the extension .npb. Backing up the entire memory content in this manner will take some time, depending on the sizes of the pianos installed.

- 💡 *Backing up from the Nord Sound Manager is done in an incremental manner. Unless you change the name or the location of the backup file, only the pianos and/or programs that have been changed since the previous backup will be saved.*

The Nord Sound Manager will suggest a location for the backup, the first time this function is selected (in My Documents/Nord Sound Manager files/). If you rather save the backup file elsewhere, use the browser to pick another destination.

### Restore

To restore a previously saved backup file to the Nord Piano, select this option and browse to a backup file on the hard drive (file extension .npb) and click Open.

- ⚠ *The restore function will begin after you have clicked Open and confirmed your intentions in the dialogue. All the content of a connected Nord Piano will then be irrevocably replaced by the content of the backup file.*

## Menus

In the Nord Sound Manager, the usual Windows and Mac OSX keyboard commands can be used. The menus can be accessed by pressing the Alt key and the underlined letter in the menu bar.

Most of the commands can also be accessed by pressing the Ctrl (on the Mac - Command) key together with the letter shown next to the command name in the menus.

File	Edit	View	Help
Sound Upload...			Ctrl+U
Sound Download...			Ctrl+D
Bank Upload..			Ctrl+Shift+U
Bank Download...			Ctrl+Shift+D
Backup...			Ctrl+B
Restore...			Ctrl+R
Clean Deleted Space Format			
Exit			Ctrl+Q

### File

#### Sound Upload (Ctrl+U)

Use this function to upload one or several sounds from the Nord Piano memory to a folder on the computer hard drive.

#### Sound Download (Ctrl+D)

Use this function to download one or several sounds from the computer hard drive to the next available location in the selected partition.

#### Bank Upload (Ctrl+Shift+U)

This allows you to upload an entire bank or partition (pianos or programs) to a folder on the computer hard drive. Select the desired source (partition and bank) and the destination folder.

If you select All, all the banks in the partition will be uploaded. The hierarchical folder structure of the chosen partition - partition/bank/sounds - will be automatically created in the destination folder.

#### Bank Download (Ctrl+Shift+D)

Use this function to download an entire bank (or all banks) from the hard drive to the Nord Piano.

Please note that you need to match the format of the source and the destination, it is e.g. not possible to download a set of programs to any of the piano banks.

- ❗ *The content of the source folder will replace the selected bank in the Nord Piano.*

#### Backup (Ctrl+B)

This will make a backup of all the pianos, programs, the Live programs and the menu settings in the Nord Piano.

The file that is created on the hard drive will have the extension .npb.

Backing up the entire memory content in this manner will take some time, depending on the sizes of the pianos.

- 💡 *Backing up from the Nord Sound Manager is done in an incremental manner. Unless you change the name or the location of the backup file, only the pianos and/or programs that have been changed since the previous backup will be saved.*

#### Restore (Ctrl+R)

To restore a previously saved backup file to the Nord Piano, select this option and browse to a backup file on the hard drive (file extension .npb) and click Open.

- ⚠ *The restore function will begin after you have clicked Open and confirmed your intentions in the dialogue. All the content of a connected Nord Piano will then be irrevocably replaced by the content of the backup file.*

## Clean Deleted Space

This function will clean up the space where any previously deleted pianos or programs have been. This is done in order to make this deleted memory space available to new additions.

- ❗ *Cleaning is automatically done if you download a new piano or program to the Nord Piano, but this menu command makes it possible to manually start the cleaning process.*

## Format

This is a radical function; it will format the entire partition that is in focus. All the sounds in the partition will be deleted. You will be asked to confirm your intentions.

## Exit (Ctrl+Q)

Exits the Nord Sound Manager application.

## Edit

### Rename (Ctrl+N)

This allows you to rename a Program. 16 characters can be used, the supported characters are: a-z, A-Z, 0-9 and the hyphen (-). Any other characters will not be displayed in the Sound Manager lists.

- ❗ *Pianos cannot be renamed so this function is not available if you have selected any of these.*

### Delete

Allows you to delete a selected item(s) from the Nord Piano memory. You will be asked to confirm your intentions.

### Select All (Ctrl+A)

Select all items in a bank/partition.

### Invert Selection

This will deselect the original selection and then select all the other items in the list.

## View

### Organize (Ctrl+O)

When this option is checked, the lists will show all the available locations in the selected partition/bank and not only the occupied ones. This will for instance make it easier to drag a file to a specific free location in the middle of the list. If this is unchecked, only the occupied locations will be shown.

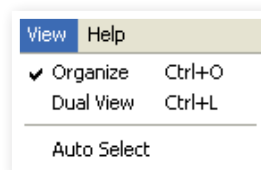
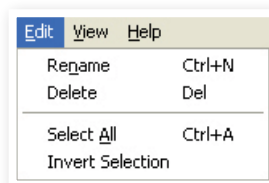
### Dual View (Ctrl+L)

When this option is checked, the window will be divided in two lists. The two lists makes it easy to move programs from one location to another. You can make the lists show separate banks with the drop-downs. Rearranging programs is simply a matter of drag and drop. Drag a program from one bank/list to another bank/list in either direction.

- 🔍 *Press the Ctrl-key on the computer keyboard to copy a selection to the destination during a drag and drop operation.*

### Auto Select (Ctrl+K)

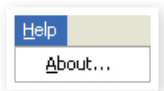
When this function is active, pianos or programs will be automatically selected in the Nord Piano when you browse through the sounds in the Manager list, with the computer keyboard arrow keys.



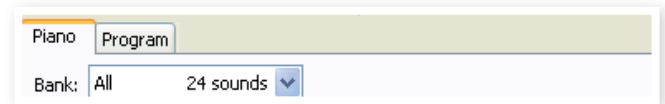
## Help

### About

Brings up the About box with a information regarding the version of the Nord Sound Manager. You will also see a list of compatible instruments and OS versions.



## Tabs



## Piano – Program

Use the tabs to select the desired partition. Type Ctrl+Tab on the computer keyboard to cycle between the tabs. The drop down menu is used to select the desired bank within the piano or program partitions. The content of the partition will be presented in the list.

## Search Box

Enter a phrase to quickly present any pianos or programs that contains the characters. Press Clear to clear the filtering and show all entries again.

## Loc - Location

The banks are organized in locations; the number of locations varies for the different bank types.

## Name

The name of the item.

## Category

Shows the assigned category for the programs, which is the piano type being used by the program.

## Size

Shows the file size of the pianos. This may be useful if you need to know how much space e.g. a particular piano occupies in the piano partition. This unit is not shown in the program lists.

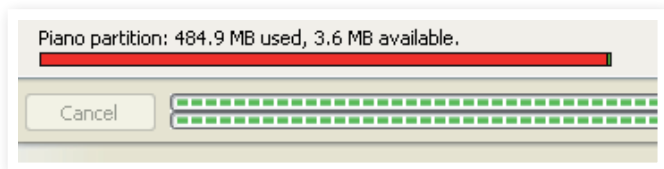
## Ver – Version Number

This indicates the version number of the actual piano or program format. Older OS versions may not be able to use sounds in a more recent format.

## Info

This area may contain error information about broken, corrupted or rejected files, if e.g. something has happened with a particular piano in the Nord Piano.

## Footer Area



The footer area is located at the bottom of the Nord Sound Manager window.

## Partition Memory Indicator

This indicates the usage of the selected partition's memory. The red area shows the used memory and the green area indicates space that is available for additional sounds.

The Piano partition is approximately 500 MB in size.

## Cancel Button

Use this function if you need to cancel a process that is in progress. Certain functions like e.g. a restore process cannot be cancelled.

## Progress Bars

The two progress bars indicate the progress of an ongoing process. The upper bar shows the progression of the individual processes, and the lower indicates the status of the entire task.

## Message/Text Area

The left part of the text area will present any confirmations or error messages from the Nord Sound Manager.

The right part will indicate if a Nord Piano is connected to the computer and in communication with the Nord Sound Manager. The OS version of the connected Nord Piano will also be displayed here.

## Updates and pianos

Please visit our website at <http://www.nordkeyboards.com> to download any updates of the Nord Sound Manager and sounds that have been released for the Nord Piano. These items will be available as free downloads in the download area and in the Libraries area.

# 9 MIDI

## About the MIDI implementation

The following MIDI messages can be transmitted and received from the Nord Piano:


### Note On/Off

- Note On and Note Off messages are transmitted and received.

### Controllers

In the MIDI Menu (see page 16), you can select if the Nord Piano should transmit and/or receive Control Change messages.

- If you have a Nord Piano Pedal connected to the pedal input, the sustain pedal is transmitted as Controller 64.
- If you have a Nord Piano Pedal connected to the pedal input, the sostenuto pedal is transmitted as Controller 66.
- If you have a Nord Piano Pedal connected to the pedal input, the soft pedal is transmitted as Controller 67.
- Almost all other controls (knobs and buttons) on the front panel are also transmitted (and received) as Control Change messages. This can be used to record your actions on the front panel into a MIDI sequencer. For a full list of which parameters correspond to the Controller numbers, see the MIDI Controller list in this chapter.

 *The Nord Piano can transmit MIDI messages via the USB interface, when the MIDI channels with the "USB" prefix is chosen. This is set on the "MIDI menu" see page 16.*

### Keyboard velocity

The Nord Piano can transmit and receive keyboard velocity messages. Release velocity is also transmitted.

### Program change

In the MIDI Menu (see page 16), you can select if the Nord Piano should send and/or receive Program Change messages.

When you select a Program, a Program Change message is transmitted via MIDI. If a Program Change message is received on the selected MIDI Channel, the Nord Piano will change Program accordingly.

The 120 Program locations send and respond to MIDI Program Change values 0-119.

### MIDI Sysex (System Exclusive)

Individual or all Programs can be transmitted and received as a System Exclusive dump.

## Nord Piano with a sequencer

### Connections

- 1 Connect the MIDI Out on the Nord Piano to the MIDI In on your sequencer, or use the USB MIDI capabilities.
- 2 Connect the MIDI Out from your sequencer to the MIDI In on the Nord Piano (or use the USB capabilities).

### Local On/Off

Local Off may be used when you use a sequencer to record and play back from Nord Piano. If the sequencer echoes back incoming MIDI data, the Nord Piano may respond twice to every note and other message/action if e.g. the keyboard and the sequencer sends the same MIDI information to the unit. Local On/Off is set on the "MIDI menu" see page 16.

### MIDI Channel

The MIDI channel that the Nord Piano uses are set up in the MIDI menu - see "MIDI menu" on page 16.

### Program Change

Usually you select a Program Change value for a track in the sequencer track settings. The 120 program locations send and respond to Program Change values 0-119.

If you want to record a Program Change message, initiate recording in the sequencer and simply select the program on the Nord Piano.

### Controllers

When you record actions with knobs and buttons, make sure that the sequencer "echoes" the changes back on the correct MIDI Channel, or your changes won't have any effect.

### About controllers & "chasing"

Consider a situation where you record a Controller message, e.g. a change in the wet/dry mix of the reverb, in the middle of your sequencer song. Then you "rewind" the sequencer to a position before the recorded reverb change. The problem is that the Nord Piano's reverb mix will remain unchanged, although it really should be as it was before you recorded the opening.

To solve this, you could record a "snapshot" of all Controller settings of the Nord Piano Program at the beginning of your sequencer song. See "Sending MIDI Controller dumps" below.

## Program & Controller dumps

To dump a Program SysEx, or MIDI Controller data via MIDI, either to another Nord Piano or for recording the data into another MIDI device, proceed as follows:

### Sending program dumps

- ① Connect the MIDI OUT on the Nord Piano to the MIDI In on the receiving device (or use the USB capabilities).
- ② Set up the receiving device to accept MIDI SysEx and MIDI Controller data.
- ③ Press Shift + MIDI and select the “Dump One” or “Dump All” menu item using the Up/Down buttons.
- ④ If needed, set the receiving MIDI device to “recording mode”.
- ⑤ Press the Store button to send the dump to the MIDI Out of Nord Piano. The display will inform you when the transmission has been completed.

❗ *For the programs, all parameters will be sent but NOT the actual piano sounds.*

When dumping back a program that uses a piano sound, make sure the actual piano are also available in the Nord Piano. Otherwise the parameters in the SysEx message will be applied to another available piano instrument.

### Sending MIDI Controller dumps

- ① Set up as in steps 1 and 2 in the preceding description.
- ② Press Shift + MIDI and select the “Send CC” menu item using the Up/Down buttons.
- ③ Press the Store button to send the dump to the MIDI Out of Nord Piano. The display will inform you when the transmission has been completed.

### Receive MIDI SysEx dumps

Here is how to receive a MIDI SysEx Dump:

- ① Connect the MIDI Out on the transmitting device to the MIDI IN on the Nord Piano.
- ② Initiate the transmission on the transmitting device.

If the dump contained all Programs (All), it will replace all programs currently stored in the Nord Piano. If the dump contained only a single program, it will be temporarily placed in the currently selected program memory location.

An asterisk will appear in the display to in the upper, left area next to the program number to indicate an unsaved edit. You then have to store the program manually to a memory location using the Store function (see “Storing Programs” on page 9).

### MIDI Controller list

The following is a list of the MIDI Controller numbers used for all the knobs and the buttons on the Nord Piano front panel:

Nord Piano Parameter	MIDI Controller
Piano Type	12
Piano Model	44
Clav Model	45
Kbd Touch	33
Mono Output	83
Acoustic Model String Resonance	79
Acoustic Model Pedal Noise	78
EQ On/Off	115
EQ Treble	113
EQ Mid	116
EQ Mid Freq	117
EQ Bass	114
Effect 1 Rate	63
Effect 1 Type	60
Effect 1 On/Off	69
Effect 2 Rate	62
Effect 2 Type	61
Effect 2 On/Off	80
Amp/Comp Amount	111
Amp/Comp Sel	81
Amp/Comp On/Off	86
Reverb Wet/Dry	102
Reverb Sel	96
Reverb On/Off	97
Sustain pedal	64
Soft pedal	67
Sostenuto pedal	66

## MIDI Implementation Chart

Function		Transmitted	Recognized	Remarks
<b>Basic Channel</b>		1 - 16	1 - 16	
<b>Default Channel</b>		1 - 16	1 - 16	
<b>Mode</b>	Default	Mode 3	Mode 3	
	Message	X	X	
	Altered			
<b>Note</b>		0-127	0-127	
<b>Number</b>	True Voice			
<b>Velocity</b>	Note ON	O, v= 1 - 127	O, v= 1 - 127	
	Note Off	O, v= 1 - 127	O, v= 1 - 127	
<b>After</b>	Key's	X	X	
<b>Touch</b>	Channel	X	X	
<b>Pitch Bender</b>		X	X	
<b>Control Change</b>		O	O	
<b>Program Change</b>		O, 0-127	O, 0-127	
<b>True#</b>				
<b>System Exclusive</b>		O	O	
<b>System</b>	Song Pos	X	X	
	Song Sel	X	X	
	Tune	X	X	
<b>System</b>	Clock	X	X	
	Realtime	Commands	X	
<b>Aux</b>	Local on/off	X	X	
	Message	All notes off	X	
	Active Sense	X	X	
	Reset	X	X	
<b>Number</b>	True Voice			

Mode 1: Omni On, Poly - Mode 2: Omni O, Mono - Mode 3: Omni Off, Poly - Mode 4: Omni Off, Mono - O = Yes - X = No

Model: Nord Piano OS v1.x Date: 2010-04-02

# 10 Index

## A

Acoustics 14  
Auto-Panning 15  
A-Wa 15

## B

Backup 22  
Bank Down 22  
Bank Download 22  
Bank Up 22  
Bank Upload 22

## C

Cancel 24  
Chorus 15  
Clavinet 13  
Clean Deleted Space 23  
Compressor 15  
Control Change 16

## D

Delete 21, 23  
Download 20

## E

Edit 9  
Effects 10, 14  
EQ 15  
Exit 23

## F

Factory presets 4  
Fine Tune 16  
Flanger 15  
Format 23

## G

Global Transpose 16

## H

Half pedalling 8  
Headphones 7

## I

Invert Selection 23

## K

Kbd Touch 14

## L

Left Out 7  
Live 10  
Live Mode 13  
Loc 23  
Local 16  
Local Control 16

## M

Master level 12  
Memory Protect 9, 16  
MIDI Channel 16  
MIDI Controller list 26  
MIDI In 7  
MIDI Indicator 12  
MIDI Menu 16  
MIDI Out 7  
Model 13  
Monitor In 7  
Mono 14

## P

Panic 13  
Partition Memory 24  
Pedal Menu 17  
Pedal Noise 14  
Phaser 15  
Piano 13  
Piano Pedal 8  
Piano Type 13  
Program 12  
Program Change 16  
Program memory 9  
Progress 24

## R

Rename 21, 23  
Restore 22  
Reverb 15

## S

Select All 23  
Send CC 16  
Shift 12  
Shift button 6  
Size 23  
Sostenuto 8  
Sound Down 21  
Sound Menu 17  
Sound Up 21  
Sound Upload 22  
Store 9, 12  
Store As 12  
String Resonance 14  
String Resonance Level 17  
System Menu 16

## T

Transfer 20  
Transpose 13  
Tremolo 15

## U

Up/Down buttons 12  
Upload 20

## W

Wah-Wah 15

